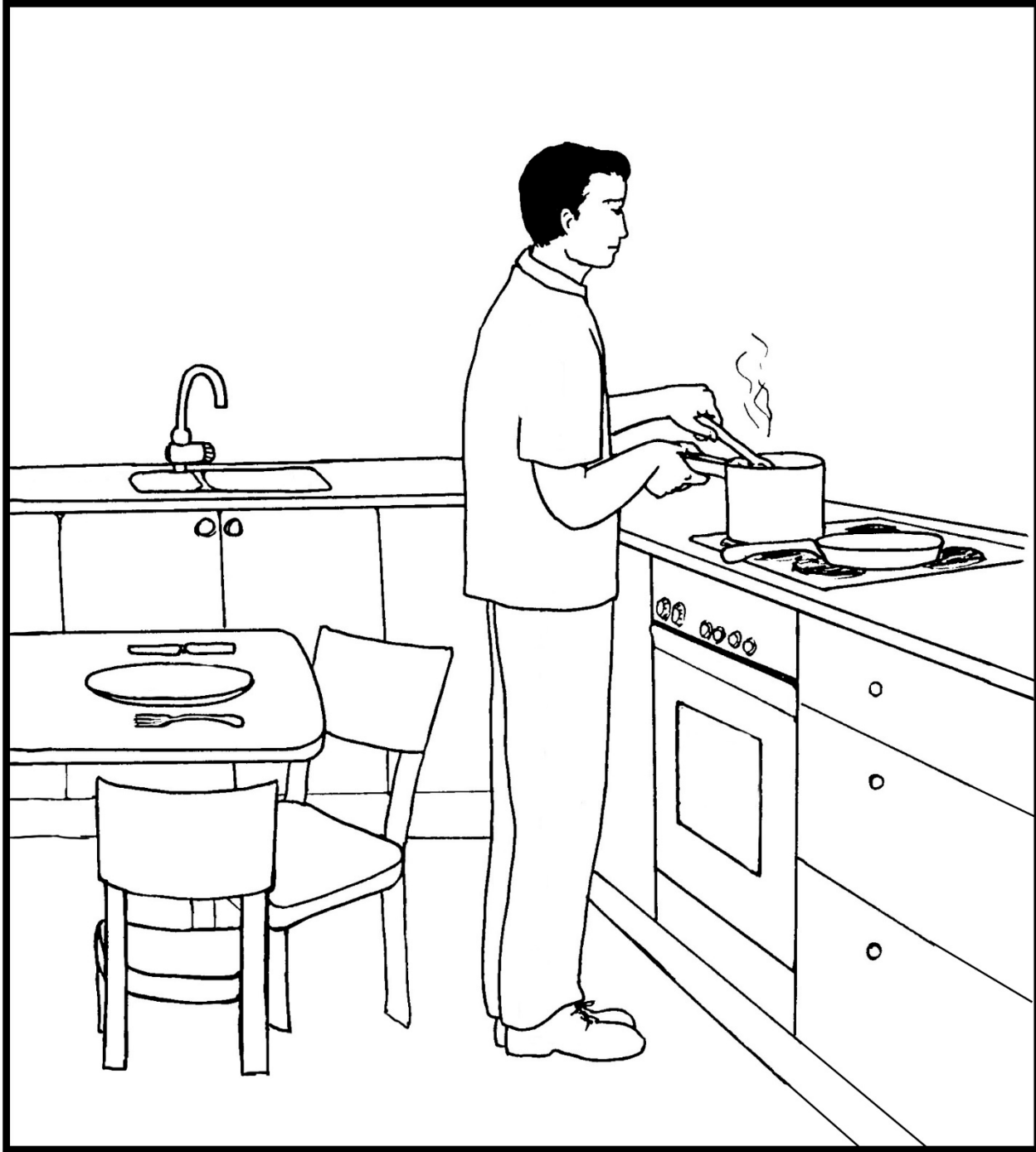


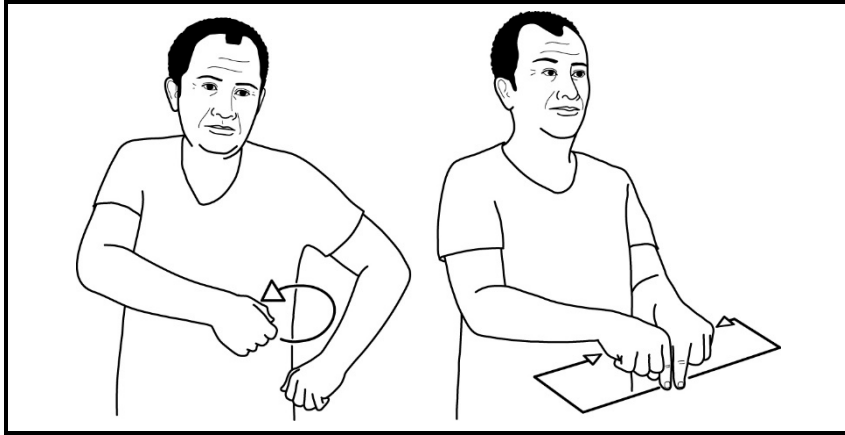
# Social Awareness Resources

Discussion pictures are a useful way of setting sign vocabulary in context and providing a scaffold to elicit further vocabulary. We will be offering a series of pictures around the home and out and about to promote this. Each picture will have 12 signs to get you started and can also be coloured in.

Descriptions which are provided free of charge still remain the copyright of Signalong The Communication Charity and must reference handshape, orientation, placement and movement. Where these signs are distributed out of the parameters of which they were supplied, Signalong must be acknowledged.



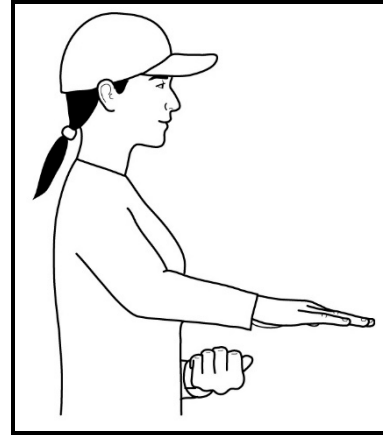
## KITCHEN



Supporting arm bent as though holding mixing bowl on hip; working fist moves in outward circle to mime stirring cake mix; then bent index hands (palms down, pointing forward) trace square shape.

Diagrams, text and descriptions ©SIGNALONG

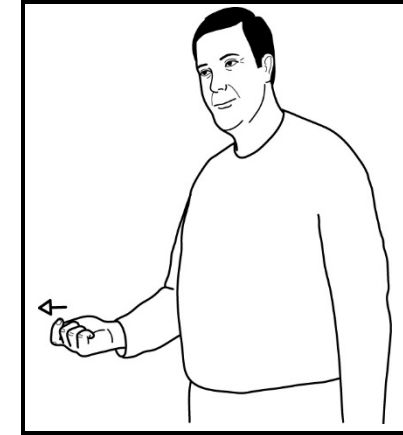
## SAUCEPAN



Supporting closed hand (palm up, pointing in) mimes holding saucepan handle; working flat hand (palm down, pointing forward) held in front indicates lid.

Diagrams, text and descriptions ©SIGNALONG

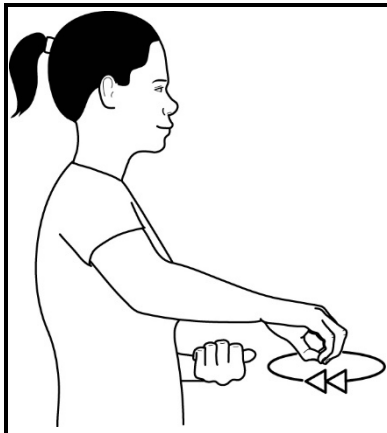
## FRYING PAN



Working tucked hand (palm up, pointing forward) moves forward a small way.

Diagrams, text and descriptions ©SIGNALONG

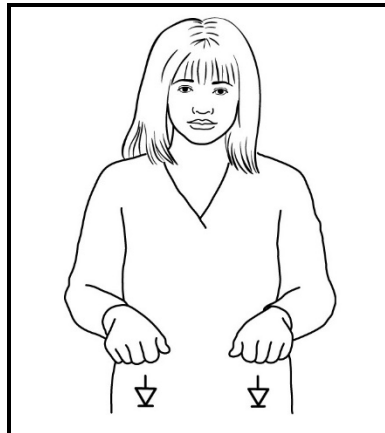
## TO COOK DINNER



Supporting closed hand (palm up, pointing in) mimes holding saucepan while working bunched hand mimes stirring.

Diagrams, text and descriptions ©SIGNALONG

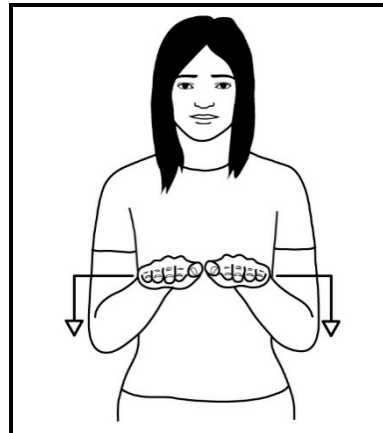
## CHAIR



Closed hands (palms down, pointing forward) move down slightly with emphasis.

Diagrams, text and descriptions ©SIGNALONG

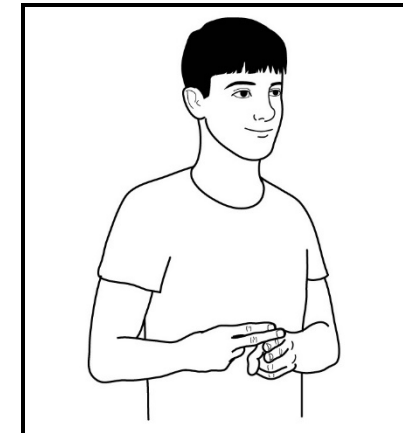
## TABLE



Flat hands (palms down, pointing forward) move apart and turn sharply to palms in, then move down to show shape of table.

Diagrams, text and descriptions ©SIGNALONG

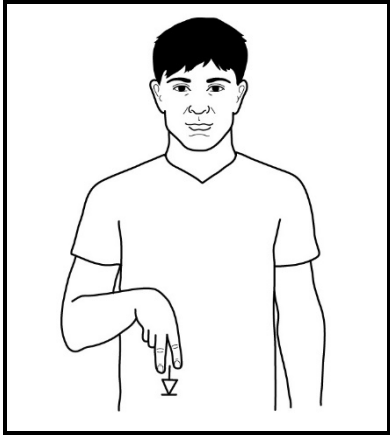
## KNIFE



Working "N" hand (palm in/back, pointing forward/in) rests on supporting "N" hand (palm in/back, pointing forward/in).

Diagrams, text and descriptions ©SIGNALONG

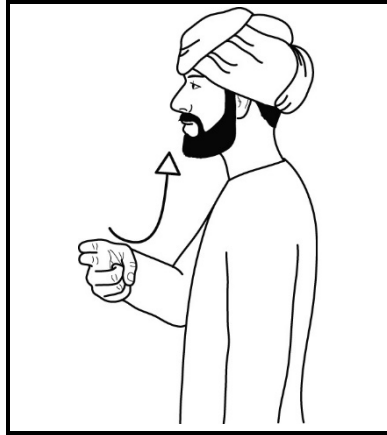
## FORK



Diagrams, text and descriptions © SIGNALONG

Working "V" hand (palm back, pointing down) makes short sharp movement down.

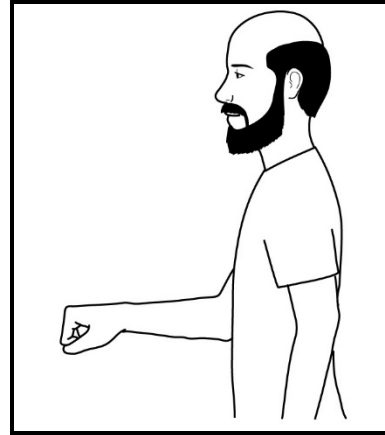
## SPOON



Diagrams, text and descriptions © SIGNALONG

Working "N" hand (palm back, pointing in) drops and lifts towards mouth.

## OVEN



Diagrams, text and descriptions © SIGNALONG

Working loosely bunched hand (palm forward/down, pointing forward/up) twists to palm up to mime turning cooker knob; then mime opening door as appropriate.

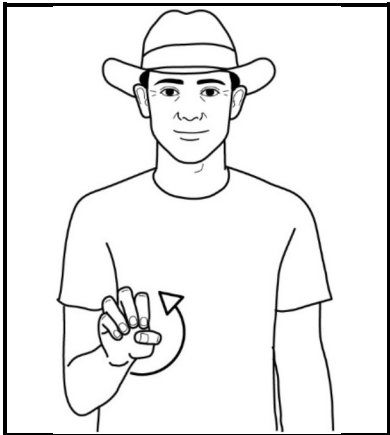
## SINK



Diagrams, text and descriptions © SIGNALONG

Loosely bunched hands mime turning taps on and off.

## COOKER



Diagrams, text and descriptions © SIGNALONG

Working loosely bunched hand (palm forward/down, pointing forward/up) twists to palm forward/up to mime turning cooker knob.

**Directional sign.**